

Mauna Kea Soil and Water Conservation District

67-1185 Mamalahoa Hwy
Suite H-148
Kamuela, HI 96743

Phone: (808) 885-6602 x102

E-mail: mkswcd@gmail.com



Mauna Kea Soil and Water Conservation District

The Mauna Kea Soil and Water Conservation is a legally constituted, self-governing unit of the State of Hawai'i, organized under the Hawai'i Soil and Water Conservation District Law, Chapter 180 of the Hawai'i Revised Statutes.

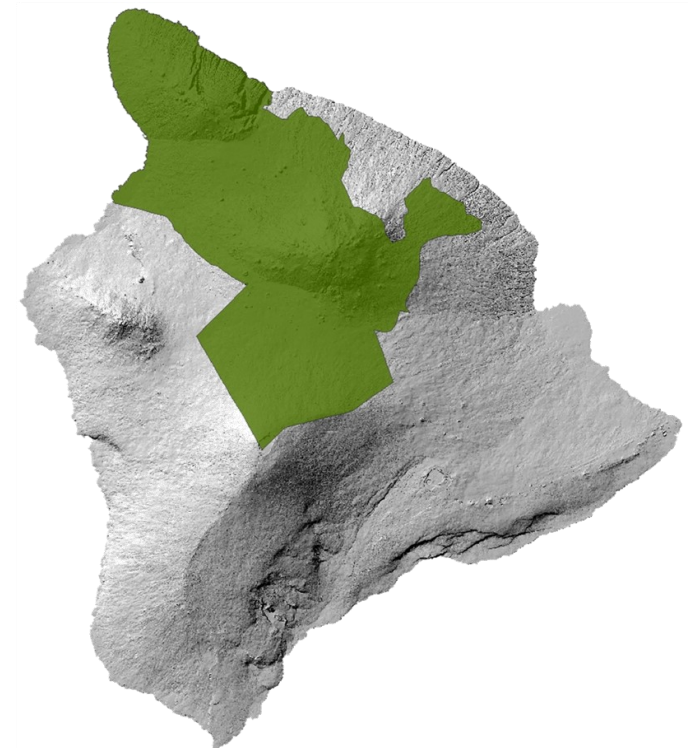
This publication was produced by the Mauna Kea Soil and Water Conservation District through contributions by the County of Hawai'i and State Department of Land and Natural Resources.

HONUA WAI OLA *'Land, Water, Life'* MAUNA KEA SOIL AND WATER CONSERVATION DISTRICT



District Overview

- ◆ Established on May 16, 1955
- ◆ Encompass Kohala, Mauna Kea, and portion of Mauna Loa
- ◆ Covers approximately 730,460 acres
- ◆ 174 soil series
- ◆ Elevation varies from sea level to 13,000 feet
- ◆ Administered by a board of directors
- ◆ Provide technical assistance and/or creation of a conservation plan
- ◆ Provide educational outreach



The Mauna Kea Soil and Water Conservation District (MKSWCD) assist our district agriculture producers, to conserve their soil, water, and natural resources. We collaborate with various agencies to provide technical and educational resources on how to best assist land users to address resource concerns in their operation.

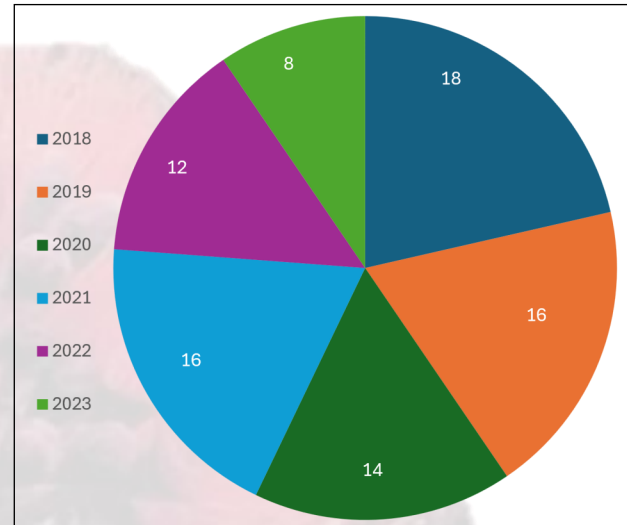
The District's Purpose and Services

MKSWCD is active in a wide variety of conservation programs and policy within the district.

- ◆ Assist in the implementation of the Hawai'i County Grading Ordinance on agriculture lands
- ◆ Create conservation plans with land users to address resource concerns
- ◆ Technical assistance to farmers, ranchers, foresters, and wildlife conservationist implementing conservation practices
- ◆ Assist with mapping, vegetation inventory, pasture health, soil health, weed management, identify resource concerns, & various conservation services
- ◆ Review & approve conservation plans developed by the district and NRCS Farm Bill
- ◆ Review local subdivision & special use requests submitted to the county
- ◆ Monthly board meetings, open to the public, to discuss district activities



Vegetation clearing, which is an example of grubbing, requires a G&G permit.



Past 6 years of G&G given through conservation plans approved by MKSWCD.

Grubbing is the process of removing, dislodging, or uprooting vegetation. **Grading** is the process of moving, tilling, or disturbing soil through fill or excavation. Ground disturbance over 1 ac or 100 yd³ of soil, a grading and grubbing (G&G) permit is required through the Hawai'i County Public Works Department. Client's that become a cooperator with MKSWCD and develops an approved conservation plan with MKSWCD or NRCS are exempt from applying for a G&G permit but must still follow the Hawai'i County Grading Ordinance.

The Hawai'i County Grading Ordinance

The Hawai'i County Grading Ordinance, Chapter 10 of Hawai'i Revised Statutes regulates all excavation, fills, grading, grubbing, and stockpiling of soil material.

Conservation Planning

What is a Conservation Plan

A conservation plan evaluates the impacts of agricultural activities on the available natural resources on the land. The goal is to reduce or eliminate soil erosion while protecting streams and coastlines from excessive sedimentation. Examples of resource concerns that can be addressed in a conservation plan includes: soil erosion, invasive species, livestock production, restoration of native forest and wildlife habitat, plant productivity, water sedimentation, and nutrient management.



High tunnels are used to increase crop productivity and health.



Wildlife habitat creation for a targeted native wildlife species such as the Kamehameha butterfly (pulelehua).

Benefits of a Conservation Plan

- ◆ Mitigate and/or eliminate resource concerns through implementing conservation practices
- ◆ Ensures there will be natural resources available for future use while protecting the environment
- ◆ Meets regulatory requirements to improve land conditions
- ◆ Improves soil quality, water quality, plant health, wildlife habitat, pasture health, air quality, and energy use
- ◆ Saves money in the long-term as your land increases productivity
- ◆ Utilize resources from multiple agencies to improve your land for future generations

Obtaining a Conservation Plan

If your land is within the Mauna Kea district, zoned agriculture, and are interested in developing a conservation plan to improve your land's resources, **contact Mauna Kea SWCD by calling (808) 885-6602 ext.102 or by email at mkswcd@gmail.com** You can also visit the USDA-NRCS Waimea Field Office, where Mauna Kea SWCD is located at the **Parker Ranch Shopping Center, 67-1185 Mamalahoa Hwy. Suite H-148 Kamuela, HI 96743.**